

Review

Unique Molecular Characteristics of the Environmental Responses of Mucosal Macrophages

KAZUE NAKATA¹, HIROYUKI INAGAWA^{1,2,3}, TAKASHI NISHIZAWA¹, CHIE KOHCHI^{1,3},
YOSHIE TANIGUCHI¹, NORIKO YOSHIOKA¹ and GEN-ICHIRO SOMA^{1,3}

¹Institute for Health Sciences, Tokushima Bunri University, Yamashiro-cho, Tokushima, 770-8514;

²Department of Applied Aquabiology, National Fisheries University, Nagata-honmachi, Shimonoseki, 759-6595;

³Drug Delivery System Center, Science University of Tokyo, Chiba, 278-8510, Japan

Abstract. Macrophages are thought to be the cells that initially respond to environmental information and transmit this information to other immune cells. We hypothesize that there is a "network system" consisting of various tissue macrophages; the macrophages respond to stimulation and transmit secondary information to neighboring cells, which is important for the maintenance of homeostasis. Macrophages exist in all animal organs as tissue macrophages, and their cellular characteristics may change as an adaptation to tissue-specific environments. It is believed that mucosal macrophages are particularly important in the macrophage network system because mucosa exist where there is regular exposure to foreign substances. However, the molecular mechanism by which intestinal mucosal macrophages respond to the external environment is not yet clear. In this review the biological characteristics of mucosal macrophages are introduced and how they recognize and eradicate various foreign substances is discussed.

Maintaining Homeostasis with the Macrophage Network

Macrophages play a central role in the immunological defense mechanism against invasive pathogens; they are the first cells to recognize foreign substances and to remove them by phagocytosis. Thereafter, they transmit this primary information to neighboring cells by secreting cytokines, by cell

adhesion and by migration and antigen presentation. Kohchi *et al.* presented a concept called the "macrophage network" hypothesis in which there is an information signal-transfer system from local activated macrophages to other macrophages by cell-to-cell contact (1). Tissue macrophages are variously named depending on their location, for example, microglia in the brain, Kupffer cells in the liver and alveolar macrophages in the lung. Macrophages were originally monocytes that differentiated from bone marrow cells, migrated to various tissues of the body via the circulatory system (2) and differentiated into various tissue-specific macrophages (3). Tissue macrophages retain the essential functions of macrophages, expressing different characteristics depending on their tissue location. For example, Kupffer cells and alveolar macrophages have similar abilities for antigen presentation and secretion of immunological mediators. However, Kupffer cells have substantially higher phagocytic activity than alveolar macrophages, while the macrophages produce significantly greater quantities of reactive oxygen species and nitric oxide (NO) than Kupffer cells (4). Thus, it is thought that macrophages play a central role in homeostasis maintenance based on the macrophage network hypothesis (the signal transduction system utilizing macrophage-to-macrophage interactions).

The Mechanism Used by Macrophages for the Recognition and Elimination of Foreign Substances

Macrophages can eliminate foreign substances by phagocytosis, recognizing and targeting a wider range of foreign substances than other phagocytes, such as neutrophils. Moreover, macrophages can recognize foreign bodies, such as microorganisms, and also cells derived from the body itself, such as wasted erythrocytes and cancer cells (5, 6). Therefore, the target of macrophages may be all foreign substances, which are recognized by various types of

Correspondence to: Gen-Ichiro Soma, Institute for Health Sciences, Tokushima Bunri University, Yamashiro-cho, Tokushima, 770-8514, Japan. Tel: +81-88-622-9611, Fax: +81-88-622-3217, e-mail: sma5628@tokushima.bunri-u.ac.jp

Key Words: Intestinal macrophages, CD14, LPS, environmental response, review.

receptors; these differ from specific antigen receptors, such as T-cell receptors and B-cell antigen receptors. Especially important are the pattern recognition receptors (PRR) that are involved in the discrimination of foreign substances (7).

In mammals, the molecules of PRR include Toll-like receptors (TLRs), which are homologs of insect TLR. TLR was originally discovered as a differentiation factor in *Drosophila* and was later found to be involved in the self-defense response (immunity) (8, 9). Currently, eleven human homologs of TLRs (1 to 11) have been identified (10-12). Each TLR recognizes a specific structure of a microorganism, such as the flagellum and/or cell-wall structures, and then evokes innate immunity responses. TLR4 was first discovered as the LPS receptor in mammals (13). Generally, TLRs have leucine-rich repeats in the extracellular region, and a highly homologous cytoplasmic Toll/interleukin-1 receptor (TIR) domain, similar to that of the interleukin-1 receptor family. After ligand binding, a signal cascade of TLRs involves adaptor molecules with TIR domains, such as MyD88, TIRAP, TRIF and TRAM. In particular, MyD88 appears to be a control adaptor molecule, which is associated with NF- κ B and MAPK (p38 and JNK) activation. However, TLR3 and TLR4 have another signal transduction cascade through activation of IRF3 and NF- κ B that does not involve MyD88 (10). Macrophages secrete pro-inflammatory cytokines, such as TNF, which activate neighboring cells which then eliminate foreign substances.

Expression of Recognition Receptors of Foreign Substance in Intestinal Mucosa

Defense from foreign substances is important for maintaining homeostasis. The gastrointestinal mucosa has the largest internal surface in the body in contact with the external environment: in order to enable efficient absorption of nutrients and water, the surface area is equivalent to 1.5 tennis courts (14). However, besides food, the intestine also contains large numbers of microorganisms and microbial products (15). It is known that many bacteria in the intestinal flora have an effect on the digestion and absorption of food, as well as on immunity (16-19). In order to avoid unnecessary inflammation, there is no inflammatory response in intestine with concomitant bacteria or their components (20). When pathogenic bacteria invade the intestine, a defense response is induced by immune cells, such as macrophages in the lumen. If the defense mechanism of the intestine fails, septicemia or endotoxin shock occurs (21-23). Many researchers have investigated the humoral and cell-mediated immunity of the acquired immune systems, but little research has been conducted on mucosal immunity, and this type of immune system is substantially different. The foreign substance

recognition receptor group, including TLRs, has only recently been discovered, leading to a rapid increase in understanding of the mechanism of mucosal immunity. It is now clear that the tolerance of normal intestinal mucosa is inversely correlated with surface receptor expression on intestinal epithelial cell (IEC), which limits front-line recognition of foreign substances (24, 25), and is positively correlated with an increased expression of a downstream signaling suppressor, Tollip (26), and the existence of external regulators which suppress TLR-mediated signaling pathways (20).

Characteristics of Intestinal Macrophages

Most macrophages are found in the intestine, where they are believed to play a role in the elimination of undesirable foreign substances and pathogens that could otherwise enter the body from the intestine (27). We hypothesized that intestinal macrophages have the most important position in the macrophage network. However, there are only a few reports on the mechanism of foreign substance recognition and elimination by intestinal macrophages. Previous papers have reported that intestinal macrophages can phagocytose foreign substances but are not then activated (28). In addition, it has been found that intestinal macrophages could phagocytose latex particles (29), but could not produce either tumor necrosis factor (TNF) or NO after stimulation with various macrophage-activating materials, such as LPS, TPA and PWM (28, 30, 31). Their hypo-responsiveness to foreign substances has been attributed to lower expression or defects in the recognition receptors on the intestinal macrophages (32).

Expression of LPS Receptors in Intestinal Macrophages

Immunohistochemical and flow cytometric studies have shown that intestinal macrophages do not express CD14 (LPS receptor) (28, 32-36), CD89 (F α receptor) (28, 32, 35), CD16 (28, 36), CD32, CD64 (F γ receptor), or CD25 (IL-2 receptor) (28). In particular, detection of CD14, a general surface marker of macrophages, has been widely recognized as a specific feature of intestinal macrophages. In CD14 knockout mice, the mice were more resistant to LPS-induced lethal shock (37) and produced significantly smaller amounts of cytokines in response to LPS (38). CD14 exists as a glycosyl phosphatidylinositol (GPI)-anchored membrane protein on macrophages. As it lacks a transmembrane domain, it is incapable of transmitting a signal through the membrane. Therefore, it was postulated that an accessory molecule performs signal transduction, creating a functional LPS-receptor together with CD14. TLR4 and MD-2 are already known to be accessory

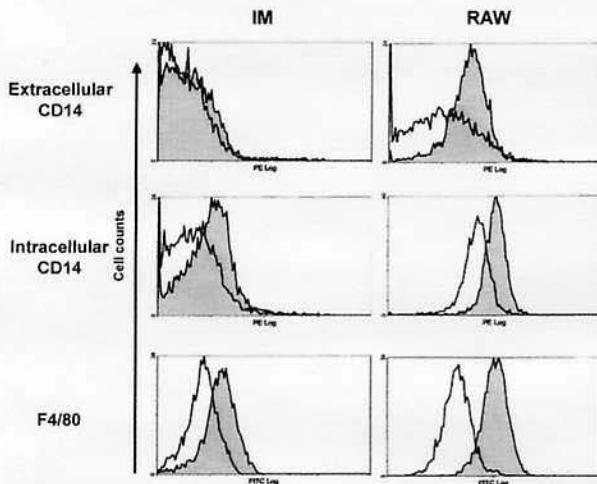


Figure 1. Intracellular expression of CD14 in intestinal macrophages. CD14 protein on the cell surface and in the cell was compared in mouse intestinal macrophages and RAW264 cells (mouse monocyte cell line) by flow cytometry.

molecules for CD14. It was confirmed, by a mapping analysis of LPS using LPS-hyporesponsive C3H/HeJ mice (39) and TLR4 knock-out mice (40), that TLR4 is the major LPS receptor. Also, MD-2 was identified as the assembly molecule with TLR4 (41). Although direct binding of LPS to TLR4 has not been proven, MD-2 is thought to be an essential molecule for LPS and TLR4 binding because of its ability to directly bind with LPS (42-44). Also, because CD14 and TLR4/MD-2 molecules recognize different portions of LPS, these molecules appear to transfer intracellular signals synergistically (45, 46). There have been several reports on the regulatory mechanism of CD14 expression by intestinal macrophage: (i) it is possible to constitute CD14 intestinal macrophage-like cells using co-culture with IECs (47, 48); (ii) Smythie *et al.* reported that a factor released from the intestinal stroma suppressed the expression of CD14 on monocytes (28); (iii) Austin *et al.* studied an *in vitro* model of epithelial injury and loss, and reported that intestinal macrophages that migrated from the lamina propria expressed CD14 and responded to LPS (49). These phenomena demonstrate that intestinal macrophages suppress CD14 expression, although the molecular mechanism is still not clear.

For CD14 mRNA, there are reports comparing the expression or non expression of CD14 mRNA of intestinal macrophages with that of peripheral blood macrophages. It is believed that the reason that expression of CD14 in the colon was higher than in the small intestine (50), was the difficulty in detecting these small genes with the experimental techniques used (the Northern-blotting method and RT-PCR). In our experiment, macrophages

were isolated from rat colons and then analyzed by real-time PCR as this technique is able to detect this small gene. The results confirmed that intestinal macrophages express more CD14 mRNA than alveolar macrophages, but less than peritoneal macrophages (51). Like intestinal macrophages, alveolar macrophages reside in the mucosa and have a direct interface with the external environment. Their CD14 expression remains at the lowest level when they are not stimulated (52). At lower concentrations of LPS (<0.1 ng/ml), alveolar macrophages behaved much like intestinal macrophages as they did not produce either TNF or NO after LPS stimulation. However, at high concentrations of LPS (>10 ng/ml), one to ten times higher TNF and NO production levels were observed than had occurred in peritoneal macrophage cell lines and monocyte cell lines (53-55). These results indicate that there is a correlation between CD14 expression and LPS responsiveness because of the increase of CD14 mRNA after LPS stimulation. Thus, intestinal macrophages are also thought to express sufficient CD14 mRNA as a response to LPS. In the m-IC_{C12} intestinal epithelial cell line, the expressed TLR4/MD-2 proteins are localized on the Golgi apparatus and not on extracellular membranes (56, 57). This fact suggests that it is possible that CD14 and TLR4/MD-2 proteins exist intracellularly in intestinal macrophages. We also confirmed the intracellular expression of CD14 protein in intestinal macrophages by flow cytometry after increasing membrane permeability and found both CD14 and the TLR4/MD-2 protein complex expressed in the cells (Figure 1). These results suggest that intestinal macrophages synthesize LPS-associated receptor proteins in the intracellular region, but these proteins are not transported onto the membrane surface of the intestinal macrophages. In the above mentioned report on m-IC_{C12} cells, it was demonstrated that intracellular TLR4/MD-2 was able to transduce LPS signals, and that gp96 of chaperone is related to the transportation of TLR4/MD-2 onto the cell membranes. After an epithelial injury, the signal transduction system of intracellular CD14 or TLR4/MD-2 is also activated in intestinal macrophages, as in the m-IC_{C12} cells. This is apparent since they express membrane CD14 and LPS responsiveness after migration out of the lamina propria.

Macrophages that recognize and eliminate foreign substances play an important role in the maintenance of homeostasis. Intestinal macrophages are not activated by foreign substances, and it is still unclear how they exchange information with other cells. It is well known that low expression of CD14 by intestinal macrophages is associated with hypo-responsiveness to foreign substances. Our previous studies also indicate that, intestinal macrophages do not express CD14 on membrane surfaces, and in macrophages from various

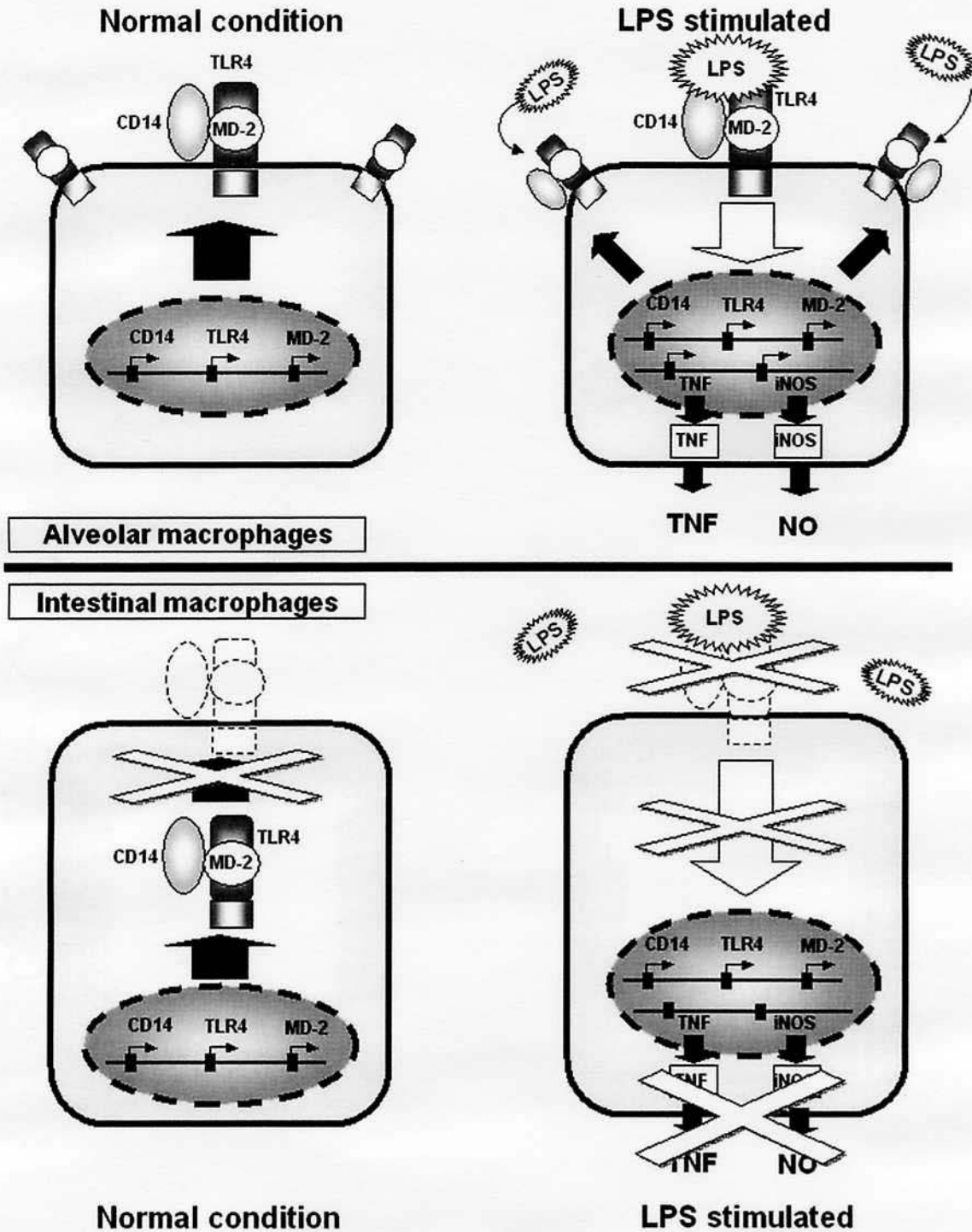


Figure 2. The expression of the LPS receptors in alveolar and intestinal macrophages. Although alveolar macrophages express little CD14 in a normal state, expression was increased by stimulation and was related to an increased production of TNF and NO.

tissue there are no differences in the different mRNA expressions of signal transduction associated with molecules except for CD14 (51). However, so far there have been no reports on the mechanism of inhibition of

CD14 protein expression in intestinal macrophages. Our recent studies strongly suggest that CD14 expression of intestinal macrophages is inhibited at the level of membrane transport. Moreover, this is believed to be a

completely different inhibitory mechanism than that employed by alveolar macrophages, which also exist in the mucosa (Figure 2). These phenomena require further investigation.

Acknowledgements

This work was supported by an "Open Research Center Project," a "University-Industry Joint Research Project," and a "High-Tech Research Center Project" of the Ministry of Education, Culture, Sports, Science and Technology, Japan.

References

- Kohchi C, Inagawa H, Hino M, Oda M, Nakata K, Yoshida A, Hori H, Terada H, Makino K, Takiguchi K and Soma G: Utilization of macrophages in anticancer therapy: the macrophage network theory. *Anticancer Res* 24: 3311-3320, 2004.
- Lewis CE and McGee JO: *The Macrophage*. Oxford, UK, Oxford University Press, 1992.
- Andus TRG, Daig R, Falk W, Scholmerich J and Gross V: The role of macrophages. In: *Inflammatory Bowel Disease*. G. N. J. Tygat JFWB and S. J. H. van Deventer (eds.). Dordrecht, The Netherlands, Kluwer, pp. 281-297, 1995.
- Laskin DL, Weinberger B and Laskin JD: Functional heterogeneity in liver and lung macrophages. *J Leukoc Biol* 70: 163-170, 2001.
- Leibovich SJ and Knyszynski A: *In vitro* recognition of "old" red blood cells by macrophages from syngeneic mice: characteristics of the macrophage-red blood cell interaction. *J Reticuloendothel Soc* 27: 411-419, 1980.
- Johnston RB Jr: Current concepts: immunology. Monocytes and macrophages. *N Engl J Med* 318: 747-752, 1988.
- Medzhitov R and Janeway CA Jr: Decoding the patterns of self and nonself by the innate immune system. *Science* 296: 298-300, 2002.
- Hashimoto C, Hudson KL and Anderson KV: The Toll gene of *Drosophila*, required for dorsal-ventral embryonic polarity, appears to encode a transmembrane protein. *Cell* 52: 269-279, 1988.
- Lemaitre B, Nicolas E, Michaut L, Reichhart JM and Hoffmann JA: The dorsoventral regulatory gene cassette *spatzle/Toll/cactus* controls the potent antifungal response in *Drosophila* adults. *Cell* 86: 973-983, 1996.
- Akira S and Takeda K: Toll-like receptor signalling. *Nat Rev Immunol* 4: 499-511, 2004.
- Takeda K and Akira S: Toll receptors and pathogen resistance. *Cell Microbiol* 5: 143-153, 2003.
- Zhang D, Zhang G, Hayden MS, Greenblatt MB, Bussey C, Flavell RA and Ghosh S: A toll-like receptor that prevents infection by uropathogenic bacteria. *Science* 303: 1522-1526, 2004.
- Medzhitov R, Preston-Hurlburt P and Janeway CA Jr: A human homologue of the *Drosophila* Toll protein signals activation of adaptive immunity. *Nature* 388: 394-397, 1997.
- Nanno M, Kanamori Y, Saito H, Kawaguchi-Miyashita M, Shimada S and Ishikawa H: Intestinal intraepithelial T lymphocytes. Our T cell horizons are expanding. *Immunol Res* 18: 41-53, 1998.
- Otte JM, Kiehne K and Herzig KH: Antimicrobial peptides in innate immunity of the human intestine. *J Gastroenterol* 38: 717-726, 2003.
- Macpherson AJ, Geuking MB and McCoy KD: Immune responses that adapt the intestinal mucosa to commensal intestinal bacteria. *Immunology* 115: 153-162, 2005.
- Barbara G, Stanghellini V, Brandi G, Cremon C, Di Nardo G, De Giorgio R and Corinaldesi R: Interactions between commensal bacteria and gut sensorimotor function in health and disease. *Am J Gastroenterol* 100: 2560-2568, 2005.
- Dubois B, Goubier A, Joubert G and Kaiserlian D: Oral tolerance and regulation of mucosal immunity. *Cell Mol Life Sci* 62: 1322-1332, 2005.
- Wittig BM and Zeitz M: The gut as an organ of immunology. *Int J Colorectal Dis* 18: 181-187, 2003.
- Cario E: Bacterial interactions with cells of the intestinal mucosa: Toll-like receptors and NOD2. *Gut* 54: 1182-1193, 2005.
- Angus DC, Linde-Zwirble WT, Lidicker J, Clermont G, Carcillo J and Pinsky MR: Epidemiology of severe sepsis in the United States: analysis of incidence, outcome, and associated costs of care. *Crit Care Med* 29: 1303-1310, 2001.
- Dal Nogare AR: Septic shock. *Am J Med Sci* 302: 50-65, 1991.
- Rangel-Frausto MS: The epidemiology of bacterial sepsis. *Infect Dis Clin North Am* 13: 299-312, vii, 1999.
- Cario E and Podolsky DK: Differential alteration in intestinal epithelial cell expression of toll-like receptor 3 (TLR3) and TLR4 in inflammatory bowel disease. *Infect Immun* 68: 7010-7017, 2000.
- Abreu MT, Vora P, Faure E, Thomas LS, Arnold ET and Arditi M: Decreased expression of Toll-like receptor-4 and MD-2 correlates with intestinal epithelial cell protection against dysregulated proinflammatory gene expression in response to bacterial lipopolysaccharide. *J Immunol* 167: 1609-1616, 2001.
- Otte JM, Cario E and Podolsky DK: Mechanisms of cross hypo-responsiveness to Toll-like receptor bacterial ligands in intestinal epithelial cells. *Gastroenterology* 126: 1054-1070, 2004.
- Lee SH, Starkey PM and Gordon S: Quantitative analysis of total macrophage content in adult mouse tissues. Immunohistochemical studies with monoclonal antibody F4/80. *J Exp Med* 161: 475-489, 1985.
- Smythies LE, Sellers M, Clements RH, Mosteller-Barnum M, Meng G, Benjamin WH, Orenstein JM and Smith PD: Human intestinal macrophages display profound inflammatory anergy despite avid phagocytic and bacteriocidal activity. *J Clin Invest* 115: 66-75, 2005.
- Bull DM and Bookman MA: Isolation and functional characterization of human intestinal mucosal lymphoid cells. *J Clin Invest* 59: 966-974, 1977.
- Nakata K, Inagawa H, Nishizawa T, Honda T, Kohchi C, Tonomoto Y, Yoshimura H, Nagasue N, Natori S, Terada H and Soma GI: Inherent potential for production of tumor necrosis factor-alpha by human intestinal macrophages. *Int J Colorectal Dis* 1-9, 2005.
- Rugtveit J, Nilsen EM, Bakka A, Carlsen H, Brandtzaeg P and Scott H: Cytokine profiles differ in newly recruited and resident subsets of mucosal macrophages from inflammatory bowel disease. *Gastroenterology* 112: 1493-505, 1997.

- 32 Smith PD, Smythies LE, Mosteller-Barnum M, Sibley DA, Russell MW, Merger M, Sellers MT, Orenstein JM, Shimada T, Graham MF and Kubagawa H: Intestinal macrophages lack CD14 and CD89 and consequently are down-regulated for LPS- and IgA-mediated activities. *J Immunol* 167: 2651-2656, 2001.
- 33 Smith PD, Janoff EN, Mosteller-Barnum M, Merger M, Orenstein JM, Kearney JF and Graham MF: Isolation and purification of CD14-negative mucosal macrophages from normal human small intestine. *J Immunol Methods* 202: 1-11, 1997.
- 34 Smith PD, Meng G, Sellers MT, Rogers TS and Shaw GM: Biological parameters of HIV-1 infection in primary intestinal lymphocytes and macrophages. *J Leukoc Biol* 68: 360-365, 2000.
- 35 Schenk M, Bouchon A, Birrer S, Colonna M and Mueller C: Macrophages expressing triggering receptor expressed on myeloid cells-1 are underrepresented in the human intestine. *J Immunol* 174: 517-524, 2005.
- 36 Rogler G, Hausmann M, Vogl D, Aschenbrenner E, Andus T, Falk W, Andreesen R, Scholmerich J and Gross V: Isolation and phenotypic characterization of colonic macrophages. *Clin Exp Immunol* 112: 205-215, 1998.
- 37 Haziot A, Ferrero E, Kontgen F, Hijiya N, Yamamoto S, Silver J, Stewart CL and Goyert SM: Resistance to endotoxin shock and reduced dissemination of gram-negative bacteria in CD14-deficient mice. *Immunity* 4: 407-414, 1996.
- 38 Moore KJ, Andersson LP, Ingalls RR, Monks BG, Li R, Arnaout MA, Golenbock DT and Freeman MW: Divergent response to LPS and bacteria in CD14-deficient murine macrophages. *J Immunol* 165: 4272-4280, 2000.
- 39 Poltorak A, He X, Smirnova I, Liu MY, Van Huffel C, Du X, Birdwell D, Alejos E, Silva M, Galanos C, Freudenberg M, Ricciardi-Castagnoli P, Layton B and Beutler B: Defective LPS signaling in C3H/HeJ and C57BL/10ScCr mice: mutations in Tlr4 gene. *Science* 282: 2085-2088, 1998.
- 40 Hoshino K, Takeuchi O, Kawai T, Sanjo H, Ogawa T, Takeda Y, Takeda K and Akira S: Cutting edge: Toll-like receptor 4 (TLR4)-deficient mice are hyporesponsive to lipopolysaccharide: evidence for TLR4 as the Lps gene product. *J Immunol* 162: 3749-3752, 1999.
- 41 Nagai Y, Shimazu R, Ogata H, Akashi S, Sudo K, Yamasaki H, Hayashi S, Iwakura Y, Kimoto M and Miyake K: Requirement for MD-1 in cell surface expression of RP105/CD180 and B-cell responsiveness to lipopolysaccharide. *Blood* 99: 1699-1705, 2002.
- 42 Akashi S, Shimazu R, Ogata H, Nagai Y, Takeda K, Kimoto M and Miyake K: Cutting edge: cell surface expression and lipopolysaccharide signaling via the toll-like receptor 4-MD-2 complex on mouse peritoneal macrophages. *J Immunol* 164: 3471-3475, 2000.
- 43 Yang H, Young DW, Gusovsky F and Chow JC: Cellular events mediated by lipopolysaccharide-stimulated toll-like receptor 4. MD-2 is required for activation of mitogen-activated protein kinases and Elk-1. *J Biol Chem* 275: 20861-20866, 2000.
- 44 Visintin A, Mazzoni A, Spitzer JA and Segal DM: Secreted MD-2 is a large polymeric protein that efficiently confers lipopolysaccharide sensitivity to Toll-like receptor 4. *Proc Natl Acad Sci USA* 98: 12156-12161, 2001.
- 45 Jiang Z, Georgel P, Du X, Shamel L, Sovath S, Mudd S, Huber M, Kalis C, Keck S, Galanos C, Freudenberg M and Beutler B: CD14 is required for MyD88-independent LPS signaling. *Nat Immunol* 6: 565-570, 2005.
- 46 Godowski PJ: A smooth operator for LPS responses. *Nat Immunol* 6: 544-546, 2005.
- 47 Spottl T, Hausmann M, Kreuz M, Peuker A, Vogl D, Scholmerich J, Falk W, Andreesen R, Andus T, Herfarth H and Rogler G: Monocyte differentiation in intestine-like macrophage phenotype induced by epithelial cells. *J Leukoc Biol* 70: 241-251, 2001.
- 48 Hausmann M, Bataille F, Spoettl T, Schreiter K, Falk W, Scholmerich J, Herfarth H and Rogler G: Physiological role of macrophage inflammatory protein-3 alpha induction during maturation of intestinal macrophages. *J Immunol* 175: 1389-1398, 2005.
- 49 Austin AS, Judge HM, Robins RA, Cockayne A and Mahida YR: Responses to free lipopolysaccharide and Escherichia coli by normal human intestinal macrophages, following their migration out of the lamina propria. *Scand J Immunol* 61: 575-584, 2005.
- 50 Ortega-Cava CF, Ishihara S, Rumi MA, Kawashima K, Ishimura N, Kazumori H, Udagawa J, Kadowaki Y and Kinoshita Y: Strategic compartmentalization of Toll-like receptor 4 in the mouse gut. *J Immunol* 170: 3977-3985, 2003.
- 51 Nakata K, Inagawa H, Nishizawa T, Kohchi C and Soma GI: Specific messenger RNA expression for signal transduction molecules by lipopolysaccharide in intestinal macrophages. *Clin Exp Immunol* 143: 484-493, 2006.
- 52 Peng Z, Zhang Z and Xu Y: Effect of Angelica sinensis injection on CD11c and CD14 expression in alveolar macrophage membrane of chronic bronchitis patients. *Zhongguo Zhong Xi Yi Jie He Za Zhi* 19: 282-285, 1999.
- 53 Hino M, Oda M, Yoshida A, Nakata K, Kohchi C, Nishizawa T, Inagawa H, Hori H, Makino K, Terada H and Soma G: Establishment of an *in vitro* model using NR8383 cells and Mycobacterium bovis Calmette-Guerin that mimics a chronic infection of Mycobacterium tuberculosis. *In Vivo* 19: 821-830, 2005.
- 54 Ogle CK, Wu JZ, Mao X, Szczur K, Alexander JW and Ogle JD: Heterogeneity of Kupffer cells and splenic, alveolar, and peritoneal macrophages for the production of TNF, IL-1, and IL-6. *Inflammation* 18: 511-523, 1994.
- 55 Tschaikowsky K: Protein kinase C inhibitors suppress LPS-induced TNF production in alveolar macrophages and in whole blood: the role of encapsulation into liposomes. *Biochim Biophys Acta* 1222: 113-121, 1994.
- 56 Hornef MW, Normark BH, Vandewalle A and Normark S: Intracellular recognition of lipopolysaccharide by toll-like receptor 4 in intestinal epithelial cells. *J Exp Med* 198: 1225-1235, 2003.
- 57 Hershberg RM: The epithelial cell cytoskeleton and intracellular trafficking. V. Polarized compartmentalization of antigen processing and Toll-like receptor signaling in intestinal epithelial cells. *Am J Physiol Gastrointest Liver Physiol* 283: G833-839, 2002.

Received May 23, 2006
 Revised June 19, 2006
 Accepted June 26, 2006